

1

2

3

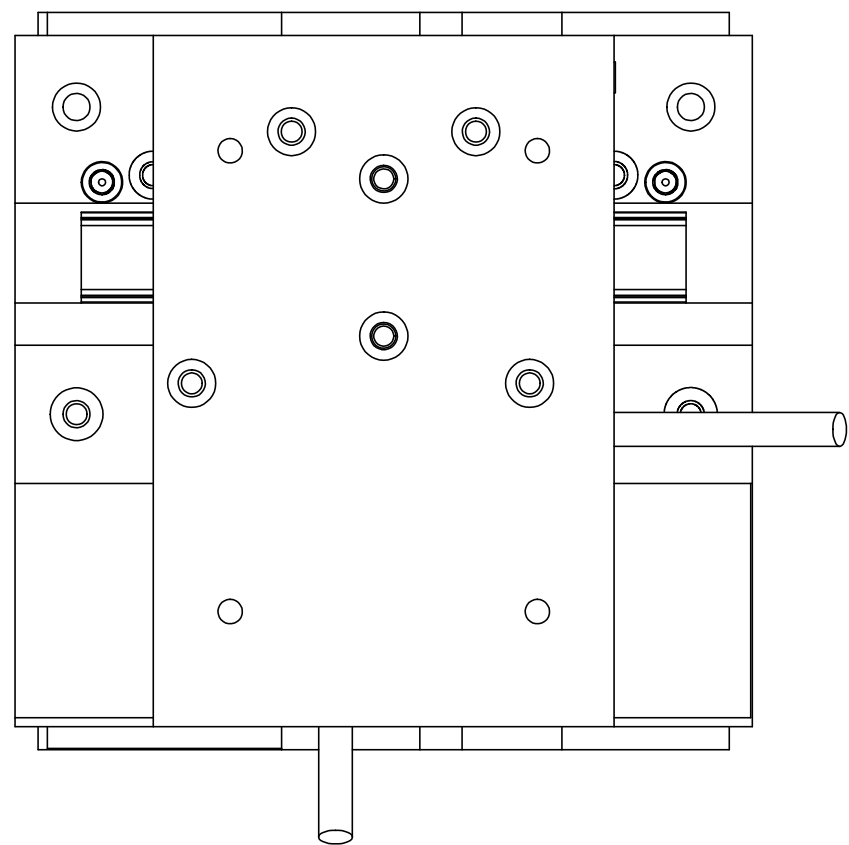
4

5

REVISION TABLE					
REV	ECN#	DESCRIPTION	REV BY	APPROVED	DATE
---	---	Original Drawing	OOG	MPW	4-5-18

A

A

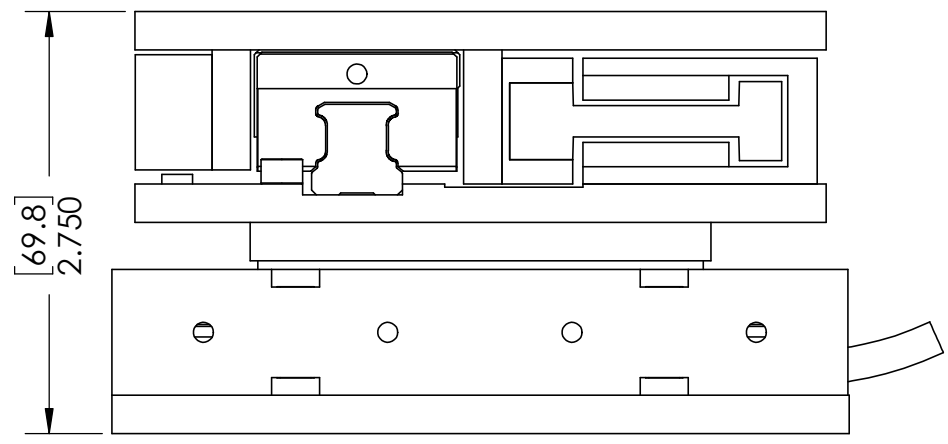
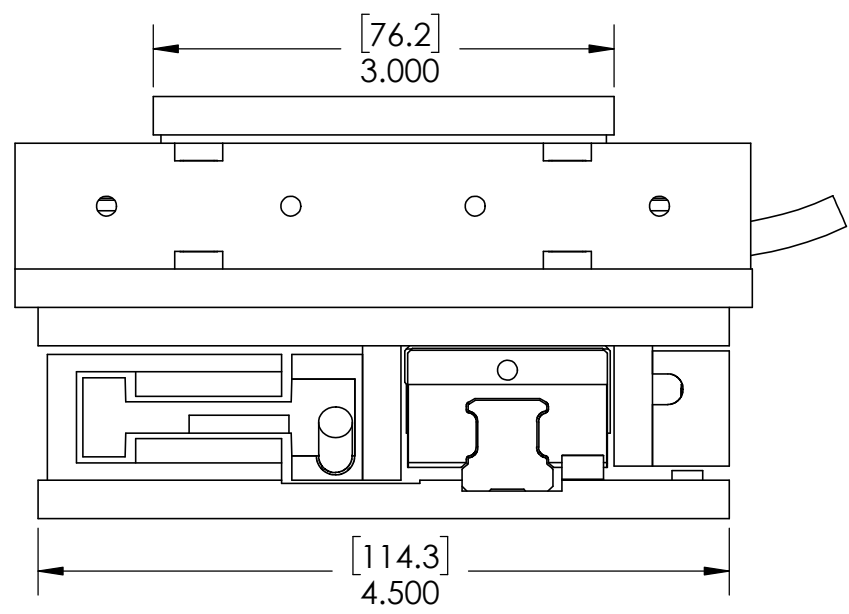
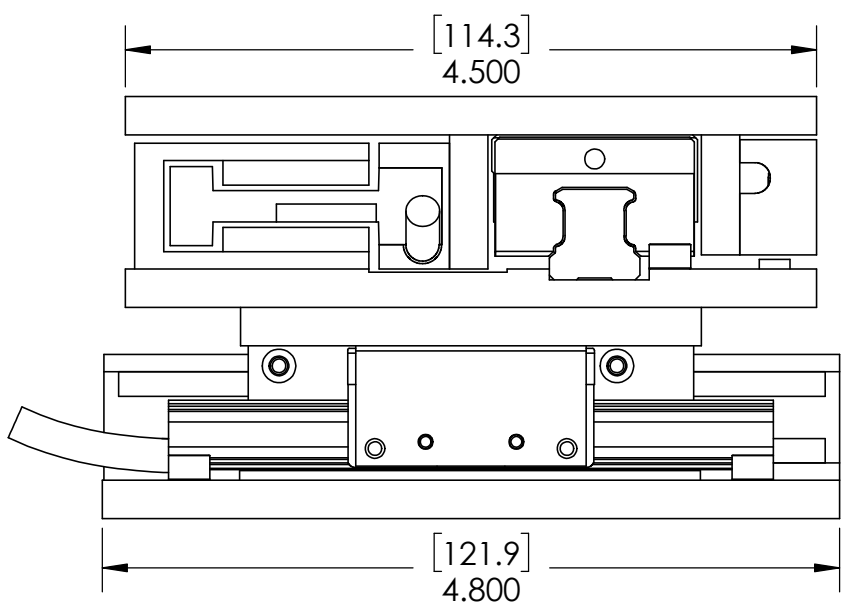


B

B

C

C



D

D

ALL AXIS SHOWN AT MID-STROKE

H2W Technologies, Inc.
 Santa Clarita, CA 91350 USA
 Tel: (661) 291-1620
www.h2wtech.com

These drawings and specifications are the property of H2W Technologies, Inc. They are issued in confidence and shall not be reproduced, copied, or used without written permission from H2W Technologies, Inc.

UNLESS SPECIFIED OTHERWISE:
 All dimensions are in inches
 Standard Tolerances are as follows
 .XXX ±.005 ANGLES ±.1°
 .XX ±.010 FILLETS .010
 .X ±.020 CORNERS .010
 Remove All Burrs and Sharp Edges

FOR REFERENCE ONLY

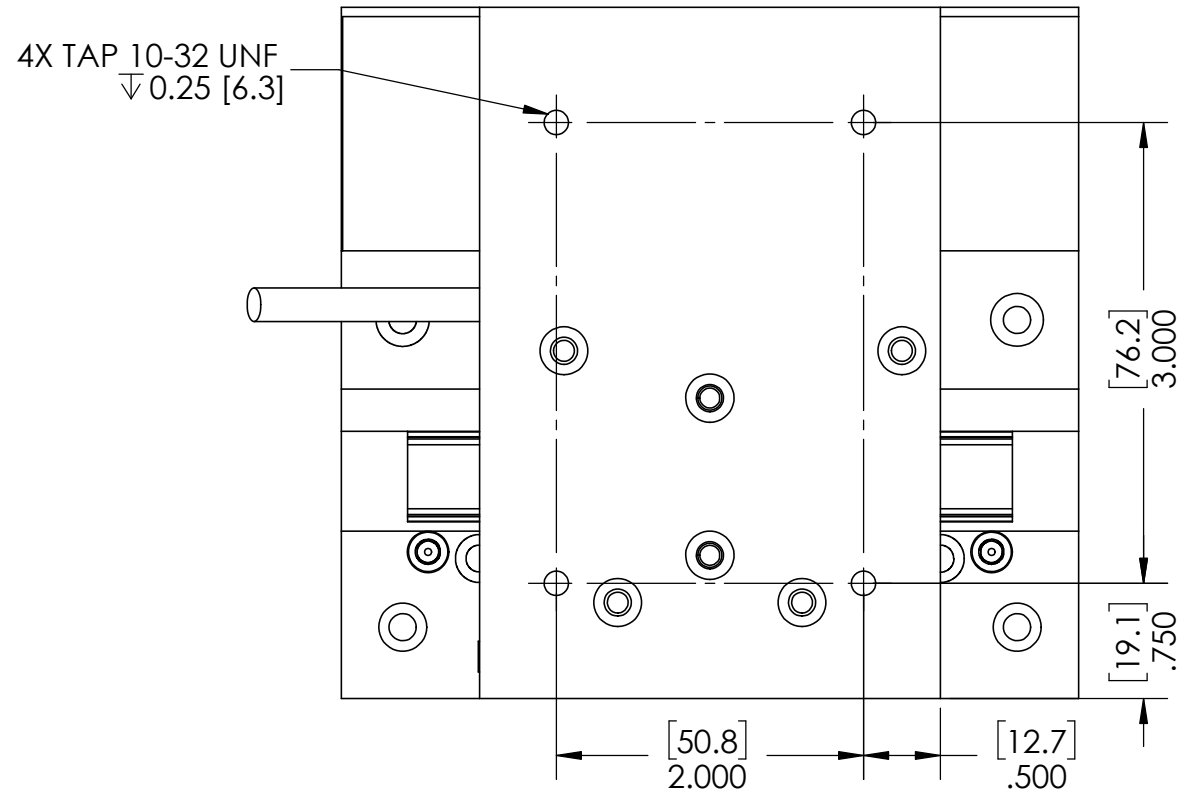
MATERIAL
 FINISH

TITLE
 Single Rail Positioning Stage Model # :
 SRS-002-003/002-003-01-XY

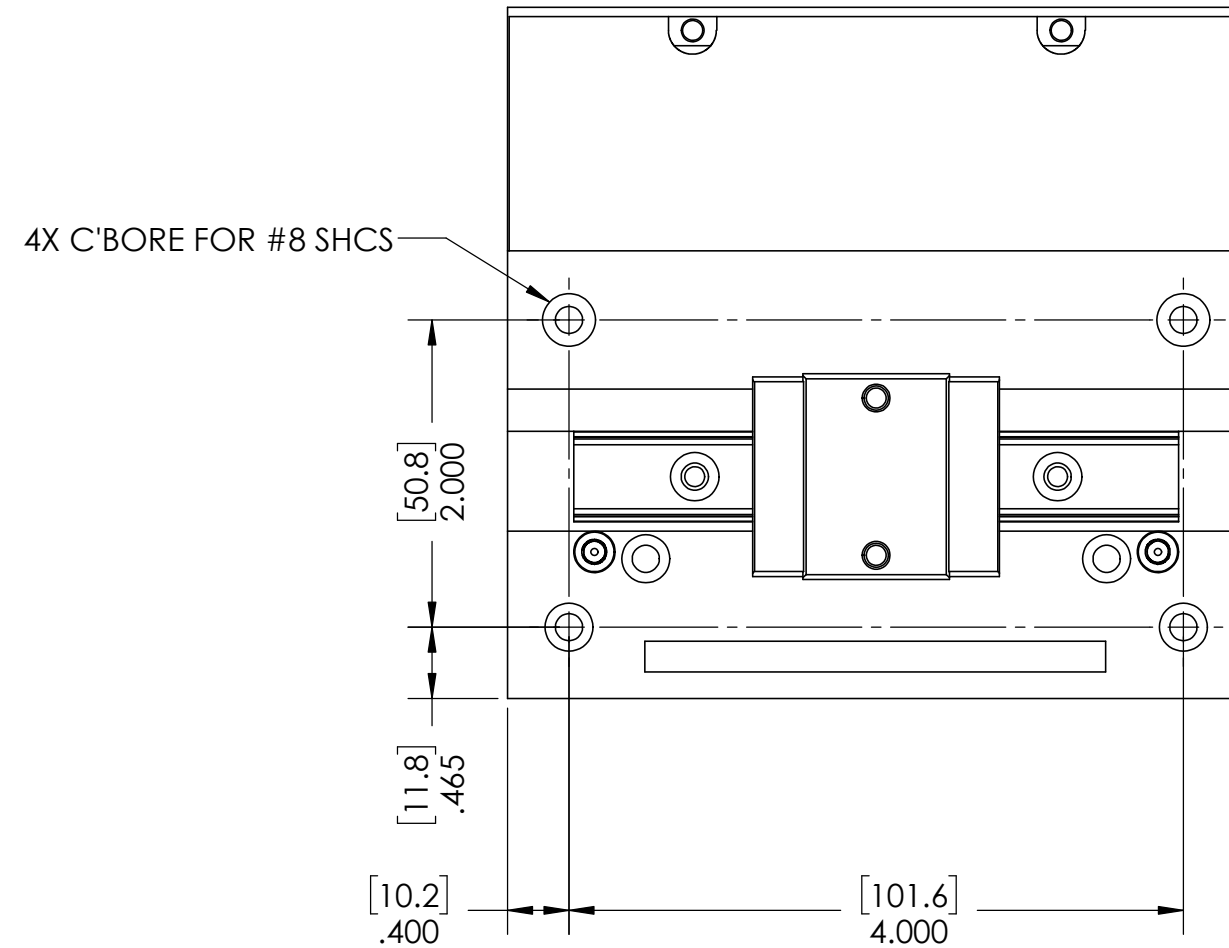
DWG # **40-0445**
 REV ----
 DATE 4-5-18 SHEET 1 of 3

MOUNTING FEATURES

TOP AXIS PAYLOAD MOUNTING HOLES



PARTS HAVE BEEN HIDDEN TO SHOW BASE MOUNTING HOLES



1

2

3

4

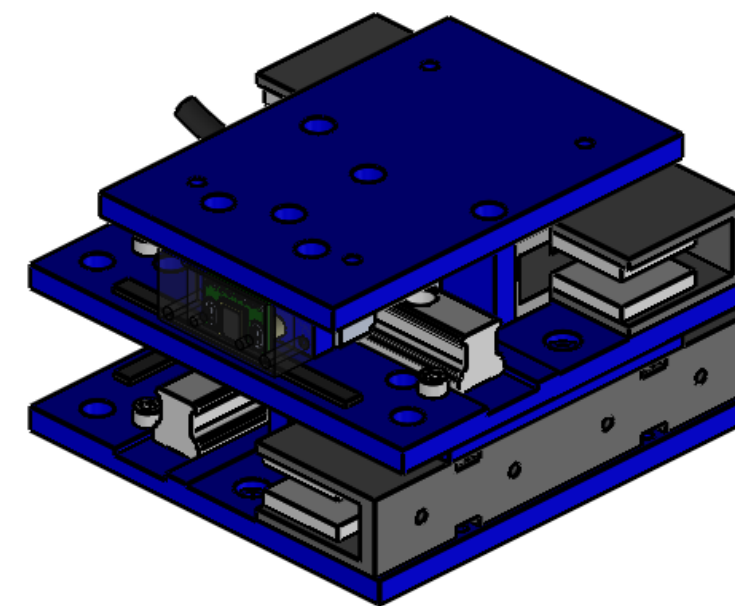
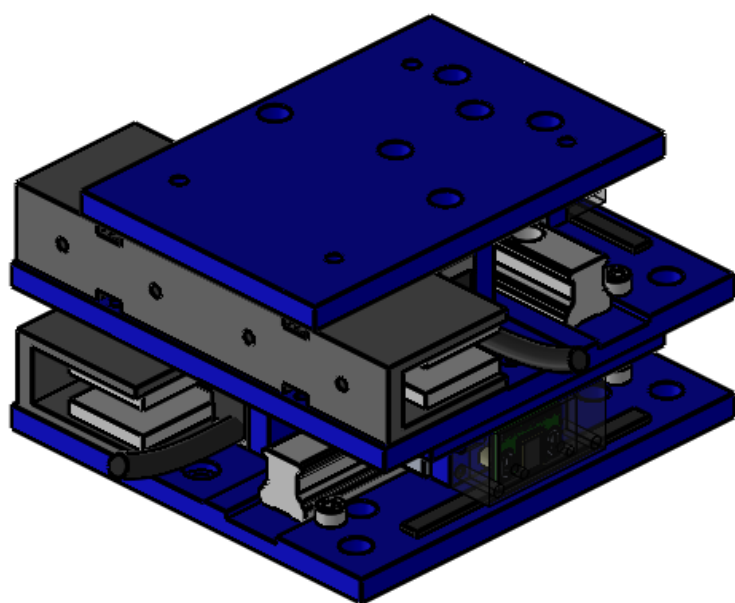
5

SINGLE RAIL POSITIONING STAGE SPECIFICATIONS (Top Axis)

Motor P/N	BLDM-B02	
Stroke	1.80"	45.7 mm
Encoder Resolution	1 micron	
Bearing Type	Linear Bearing	
Moving Mass	0.80 lbs	0.36 Kg
Total Mass	3.0 lbs	1.36 Kg
Resistance @ 25C	3.2 ohms	
Inductance @ 25C	15.9 mH	
Electrical Time Constant	1.0 msec	
Motor Constant	0.84 LBS/SQRT(Watt)	3.7 N/SQRT(Watt)
Force Constant	1.48 LBS/A Peak	6.57 N/A Peak
Back EMF	0.17 V/ips	6.7 V/m/sec
Force @ 100% Duty	3.1 LBS	13.8 N
Power @ 100% Duty	19.6 Watts	
Current @ 100% Duty	2.1 Amps	
Force @ 10% Duty	9.4 LBS	41.8 N
Power @ 10% Duty	176 Watts	
Current @ 10% Duty	6.3 Amps	

SINGLE RAIL POSITIONING STAGE SPECIFICATIONS (Bottom Axis)

Motor P/N	BLDM-B02	
Stroke	1.80"	45.7 mm
Encoder Resolution	1 micron	
Bearing Type	Linear Bearing	
Moving Mass	0.80 lbs	0.36 Kg
Total Mass	3.0 lbs	1.36 Kg
Resistance @ 25C	3.2 ohms	
Inductance @ 25C	15.9 mH	
Electrical Time Constant	1.0 msec	
Motor Constant	0.84 LBS/SQRT(Watt)	3.7 N/SQRT(Watt)
Force Constant	1.48 LBS/A Peak	6.57 N/A Peak
Back EMF	0.17 V/ips	6.7 V/m/sec
Force @ 100% Duty	3.1 LBS	13.8 N
Power @ 100% Duty	19.6 Watts	
Current @ 100% Duty	2.1 Amps	
Force @ 10% Duty	9.4 LBS	41.8 N
Power @ 10% Duty	176 Watts	
Current @ 10% Duty	6.3 Amps	



NOTE:
1. ELECTRICAL SPECS & MASSES ARE PER INDIVIDUAL AXIS.



H2W Technologies, Inc.
Santa Clarita, CA 91350 USA
Tel: (661) 291-1620
www.h2wtech.com

These drawings and specifications are the property of H2W Technologies, Inc. They are issued in confidence and shall not be reproduced, copied, or used without written permission from H2W Technologies, Inc.

UNLESS SPECIFIED OTHERWISE:
All dimensions are in inches
Standard Tolerances are as follows
.XXX ±.005 ANGLES ±.1°
.XX ±.010 FILLETS .010
.X ±.020 CORNERS .010
Remove All Burrs and Sharp Edges

**FOR
REFERENCE
ONLY**

MATERIAL

FINISH

TITLE

Single Rail Positioning Stage Model #:
SRS-002-003/002-003-01-XY

DWG #

40-0445

REV

DATE
4-5-18

SHEET

3 of 3